

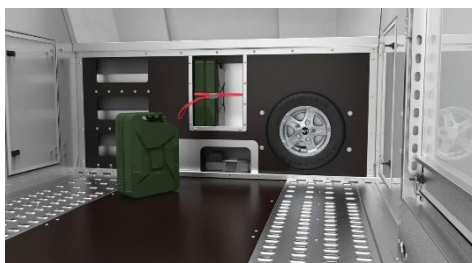
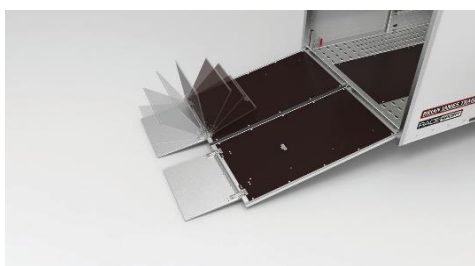
# Coastmac

## TRAILERS

**MODEL: Race Sport Car Transporter 2.6t**

# BRIAN JAMES TRAILERS

## MECHANICAL BRAKED 2,600KG ATM



- ATM – 2,600Kg
- TARE – 1,080Kg
- Carrying Capacity – 1,520Kg
- Deck space – 5m x 2m
- Gullwing Doors
- Daylight Roof
- Twin Rear Ramp System
- Rear Stabilizer Legs
- ALKO Independent Rubber Suspension
- Multiple Tie Down Point
- New Tyres (spare included)
- H/D Jockey Wheel
- Licensed\*



## \$23,990 inc GST

\*WA only- Stamp duty and transfer payable

\*\*\*Specifications and pricing may change without notice\*\*\*

## COASTAL MACHINERY PTY LTD

### HEAD OFFICE / BUNBURY

334 South Western Hwy,  
Picton WA 6229

PH: (08) 9726 2276

FAX: (08) 9726 2286

info@coastmactrailers.com.au

### WELSHPOOL

1/145 Welshpool Rd, Welshpool WA  
6106

PH: (08) 9493 2276

FAX: (08) 9493 2286

welshpool@coastmactrailers.com.au

### WANGARA

1/18 Distinction Rd, Wangara WA  
6065

PH: (08) 6305 0860

FAX: (08) 6305 0876

wangara@coastmactrailers.com.au

Postal Address: PO Box A304 Australind 6233

www.coastmactrailers.com.au